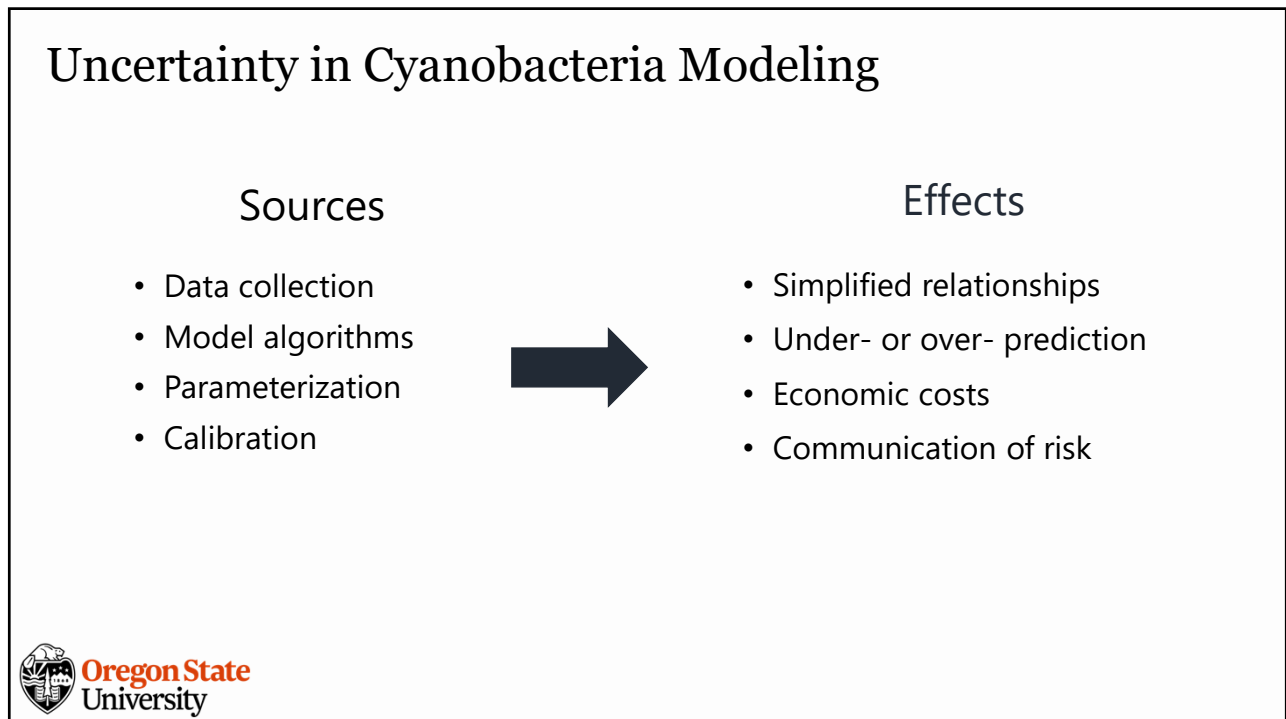


1



2

HCBs at Ross Island Lagoon

OHA: Cyanobacteria bloom seen in Ross Island Lagoon, public urged to avoid contact with the water

by KATU Staff
Wednesday, Aug 9th 2023



Ross Island Lagoon - KATU photo



PORTLAND, Ore. —

The Oregon Health Authority has issued a recreational use health advisory for the Ross Island Lagoon due to the visual presence of a cyanobacteria bloom.



HEALTH

Willamette from Cathedral Park to Ross Island unsafe due to algae, OHA says

Updated: Aug. 17, 2023, 8:03 a.m. | Published: Aug. 16, 2023, 2:06 p.m.



A toxic algae bloom is seen at the Ross Island Lagoon on the Willamette River in Portland, Oregon on Monday, Aug. 14, 2023.



By Fedor Zarkhin | The Oregonian/OregonLive
Portlanders looking for a break from the heat should avoid the Willamette River between Cathedral Park and Ross Island because of a [toxic algae bloom](#). The Oregon Health Authority warned

Environmental Group Sues DEQ Over Poor Water Quality in Ross Island Lagoon

The Northwest Environmental Defense Center says the state erred in issuing a permit to allow Ross Island Sand & Gravel to continue refilling the Willamette River bottom.

Expand



Ross Island Lagoon algal bloom. (Eagle Eye Droneography)

By Nigel Jaquiss

April 11, 2023 at 12:23 pm PDT

3

Study Questions

1. How does the variation in parameterization of key algae sources and sinks affect the sensitivity of key algae outputs?
2. What is the extent of error associated with the use of default constants for algae parameters when representing local environmental conditions?
3. How do different limnological conditions influence the magnitude of error resulting from variations in algae parameters?



4

Methods

Objective One	Objective Two	Objective Three
Local Sensitivity Analysis	Performance analysis of observed versus simulated values using default parameters	Rerun analyses on different site(s)



5

Questions?

Zoe Chavis, EIT
 chavisz@oregonstate.edu

Desirée Tullos, PhD, PE(OR)
 desiree.tullos@oregonstate.edu



The StoryMap



Research Website

6